



MEDIT *i900*

QR CODE
(01) 18660072102899
(02) 18660072102899
(03) 2008-03-27



Designed by MEDIT
Medical Science
Model: M01-9000
QR CODE
(01) 18660072102899
(02) 18660072102899
(03) 2008-03-27
MEDIT Corp.
www.medit.com
Made in Korea

ALL IN ON INNOVATION

The Medit *i900* features cutting-edge tech for smoother scanning, easier handling, and improved scan accuracy.

A smarter, easier way to work.

Touch Band

- Real-time light and haptic feedback
- Button-free rotation

Wand Tip

- Multiple tip sizes to customize patient comfort

Intelligent Sensor

- LED and haptic feedback



Touch Pad

- Customizable command actions
- Mouse-free with smart interaction

Fast Preheating

- Ready to scan instantly

Light & Compact

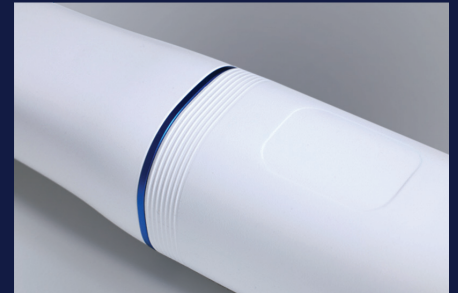
- 165 g wand weight
- 223.4 mm compact size

Unibody design

- Jointless design with perfect balance
- No biohazard concerns
- Reinforced, hassle-free cable

3rd-Generation Optical Engine

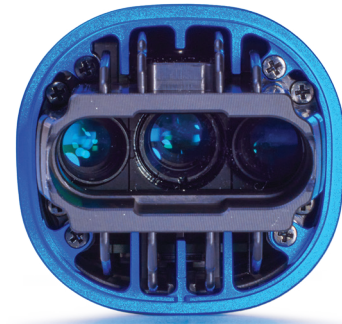
- Advanced 10-bit camera technology



ALL IN ON **PERFORMANCE**

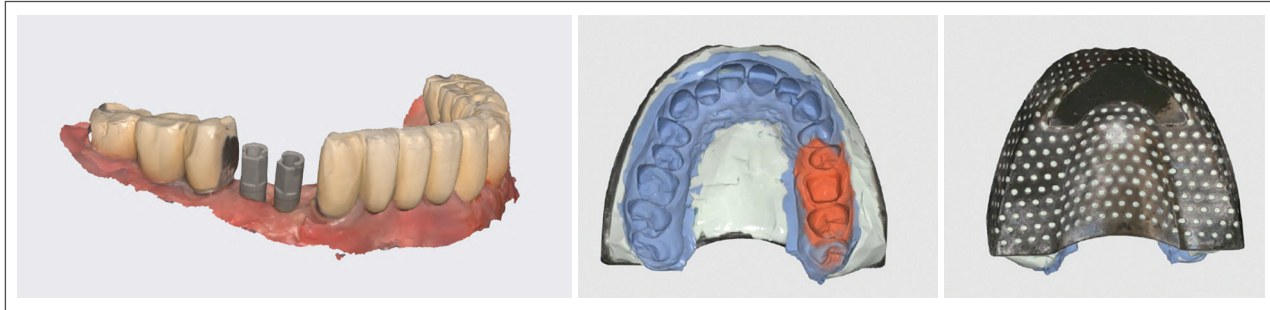
3rd-Generation New Optical Engine

The i900 features a groundbreaking optical engine with 10-bit imaging technology, delivering unmatched image clarity, true-to-life colors, and deep scanning depth that captures every detail.

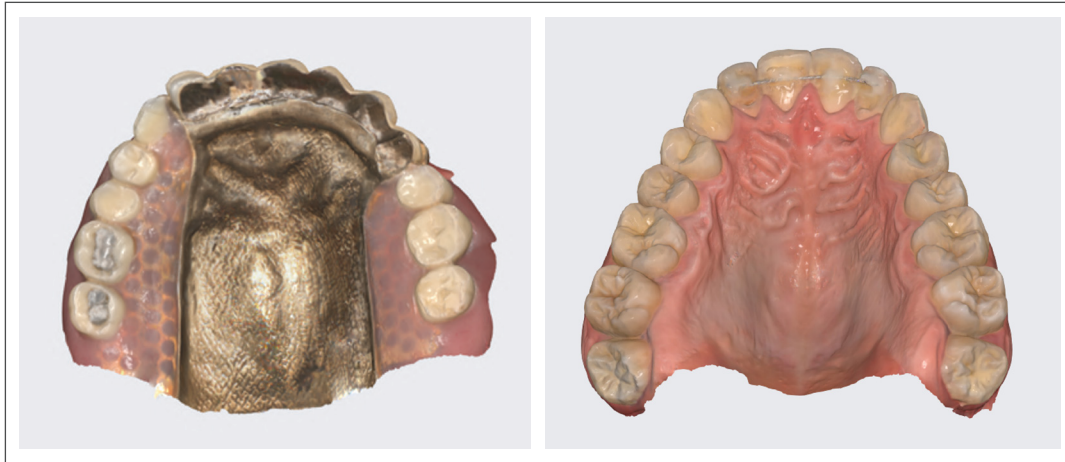


ALL IN ON **TECHNOLOGY**

The *i900*'s cutting-edge optical engine allows you to overcome scanning obstacles like reflective metals and tight spaces in the oral cavity.



The *i900* boasts a larger scanning area for fast, comprehensive data capture, making it the ideal choice for scanning tissue or non-ideal surfaces.



ALL IN ON USABILITY

With a lightweight, ergonomic design, the *i900* ensures anyone in your clinic can master scanning with unparalleled ease.

An increased field of view captures a wider area with minimal effort, ensuring speed and accuracy in every session.

A new unibody design ensures perfect balance and eliminates contamination worries.

Patient Comfort

Multiple tip sizes customize comfort.



S: 18.36 x 13.1 mm
M: 22.4 x 16.3 mm
L: 26.9 x 19.7 mm



Revolutionary Touch Band & Touch Pad Functionality

Level up your experience with a scanner that redefines the scanning process with an intuitive Touch Band and Touch Pad.

Our groundbreaking 360° Touch Band provides easy navigation with haptic feedback. A button-free operation gives you precise control from any angle and allows you to easily start and stop scanning.

Ergonomic with Smart Interaction

Light. Compact. Portable.

Featherlight at 165 grams (5.8 ounces) and built for easy scanning, our compact, portable scanner offers unbridled freedom.

Vibrant LED Indicators

LED indicators on the bottom offer vivid and quick visibility of your scanner's status - further simplifying your overall experience.



ALL IN ON CONVENIENCE

Enjoy a hassle-free experience right from the start

The Medit *i900* is the complete scanning solution for your practice. Every *i900* comes bundled with an optimized and managed laptop—meaning you will never have to worry about software changes or suboptimal performance.



Simple to set up. Start scanning right out of the box.

ALL IN One Package

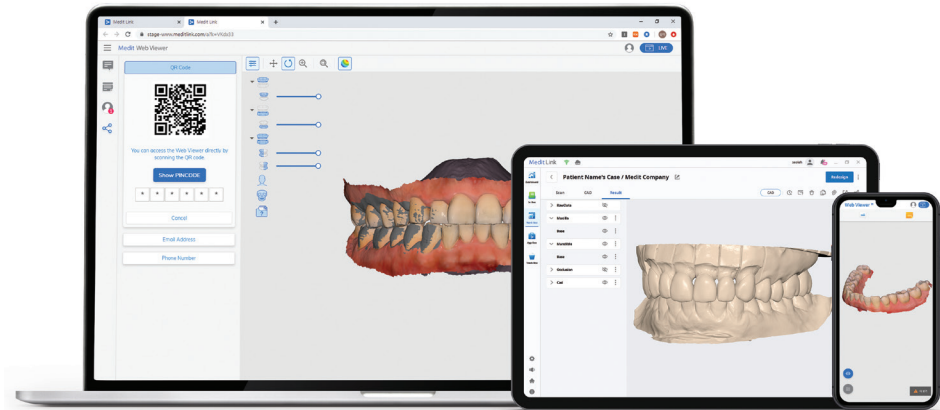


- *i*900 wand and cradle
- Four wand tips in two sizes (M, L)
- 2 flexible, hassle-free cables
- Preconfigured laptop with Medit Link installed
- 3-year warranty

Seamless Integration

Medit Link, our fully open system, integrates the *i*900 with your existing practice software, enhancing workflows without complication.

MEDIT Link





ALL IN ON CARE

A better patient experience

The i900 allows you to focus on what you do best: providing outstanding patient care. High-detail scans boost treatment acceptance and reduce lab remakes so your patients get what they need fast.

We're ALL IN for Your Success

Specifications

Category	Medit <i>i</i> 900	
Scanning technology	Capture rate	Fastest
	Imaging technology	3D in-motion video technology/ 3D full-color streaming capture
	Anti-fogging technology	Adaptive air flow
	Camera grab	10 bit
Handpiece	Dimensions (W x H x L)	36.7 x 35.3 x 223.4 mm
	Total weight	165 g (including medium tip)
Tip	Head size (W x H)	L: 26.9 x 19.7 mm M: 22.4 x 16.3 mm S: 18.36 x 13.1 mm (sold separately)
	Field of view	L: 18 x 15mm (552 x 460 px) M: 14 x 11.5mm (428 x 352 px) S: 10 x 8 mm (308 x 252 px)
	Autoclavable	Up to 150 times Autoclave 134°C 4 mins and dry for 20 mins (Pre-Vacuum Type) Autoclave 135°C 10 mins and dry for 30 mins (Gravity Type)
	Material	PPSU Polyphenylsulfone
Cable	USB C-Type Power Delivery Cable: 2 m & 2.5 m	

The Medit *i900* isn't just leading technology with advanced usability.

No hidden fees or ongoing subscriptions - just a single package with everything you need to streamline workflows and patient care.

We're ALL IN for Your Success

